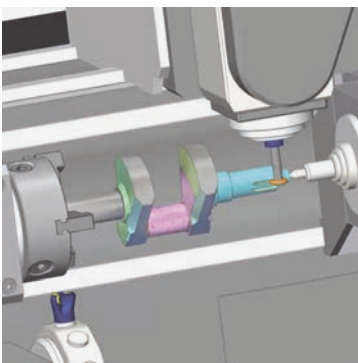
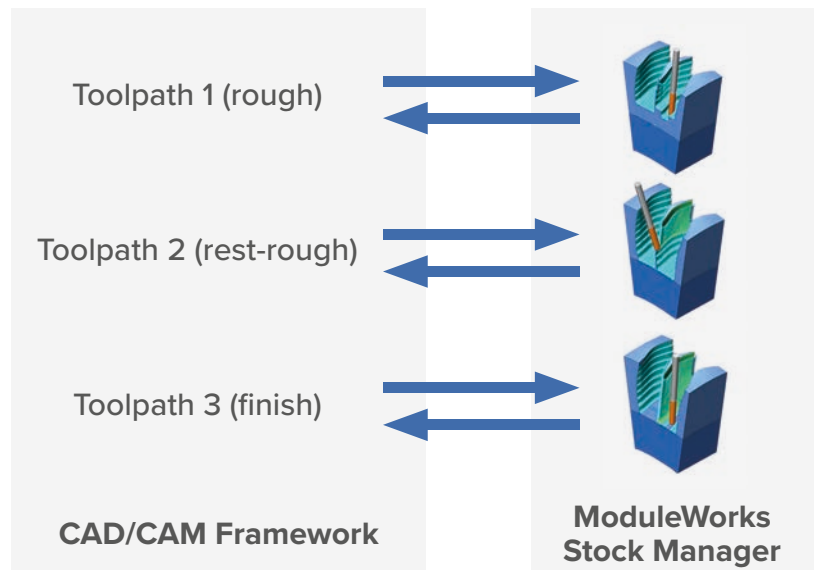


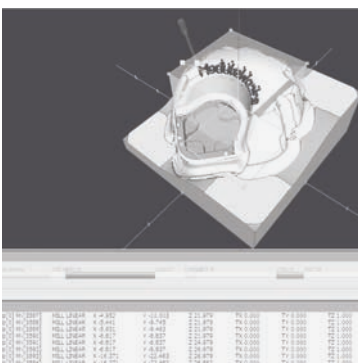


# Stock Manager Component

*Stock Manager is a library that provides in-process stock models at the operation planning and designing stage. Stock models are added to the ModuleWorks project structure and can be easily integrated into existing toolpath planning stages to provide useful features such as stock measurement and multi-channel machining.*



Milling and Turning



Stock Manager UI Demo

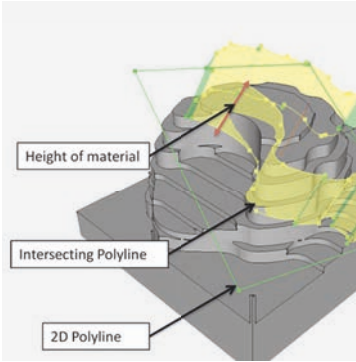
## Key Benefits

- State-of-the-art technology
- Industry-proven core technology
- Reduced time to market
- Cost effective implementation of material removal

## Stock Model Management

- Handle complex multi-stock simulation
- Material removal during operation planning/design
- Handles multiple instances of cutting simulation
- Simple interface to the removal engine
- Stock model available at any given point in the operation

## Fact Sheet: Stock Manager Component



Stock Measurement

### Stock Measurement

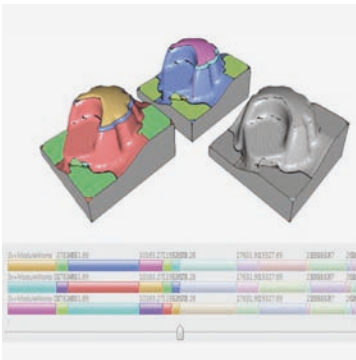
- Retrieve intersecting polylines from a 2D polyline and current material
- Return the height of material within the intersecting polyline
- Measure the positions and depth of the remaining material



Slide to reload Stock

### Persistency

- User can “rollback” the simulation
- Simulation can be restarted after rollback from a specific point with different parameters



Multi-Workpiece Feature

### Multi Channel Machining

- Multiple workpieces
- Simultaneous removal over all workpieces
- Mixed precisions
- Mixed datamodels
- Change the workpiece position during the run

For information on other CAD/CAM components, including 3-axis and 5-axis toolpaths, visit:

[www.moduleworks.com](http://www.moduleworks.com)



**ModuleWorks**

ModuleWorks GmbH  
Aachen, Germany  
Tel: +49 241 99 000 40  
info@moduleworks.com  
www.moduleworks.com

ModuleWorks Japan  
Fujisawa, Japan  
Tel: +81 466 54 9144  
hashimoto.h@moduleworks.com  
www.moduleworks.com



Sign up for our Newsletter at:  
[www.moduleworks.com](http://www.moduleworks.com)